

**ACCU-ARM®**



... the reliable, rock-solid cable-free farm scale,  
from OSBORNE

# ACCU-ARM® SCALES

Fast, accurate weighing  
to help you measure  
growth efficiently and  
market at the weight  
packers want.



**OSBORNE  
INDUSTRIES INC.**  
THE INDUSTRY STANDARD

# Scales

## ACCU-ARM® Scales From Osborne The Reliable, Rock-Solid, Cable-Free Farm Scales

### The Right Way To Weigh For Efficient Management

Osborne ACCU-ARM Portable and Wall-Mount Scales feature an advanced, patented weighing system. It's designed to make weighing with ACCU-ARM easier, faster, and more accurate than with any other farm scale you can buy. We've eliminated conventional cables and torsion bars. The result is a "rock-solid," animal-friendly scale that uses precision levers to reduce sway and bounce. The quiet, almost motionless operation of ACCU-ARM Scales helps maximize weighing accuracy and minimize animal injury. Gate options let your workers load animals more easily, with fewer delays. So the entire operation is more efficient and less stressful for you and your livestock.



### Profit From ACCU-ARM Weighing

Whether you are weighing market hogs to capture packer premiums or checking growth to optimize feed changes, ACCU-ARM weighing pays big dividends. Because animals feel secure on the solid ACCU-ARM platform, you'll get the job done faster, too. The firm floor and easy access encourage animals to enter and exit quickly – without balking. Resistance is low even after repeated weighing, making ACCU-ARM the scale of choice for research and performance testing as well as for production management.

### Customize Your Scale To Your Task

Our exclusive Weigh Arm system is modular and can be center-mounted or moved to the side to permit complete access to livestock for medical treatment or ultrasound measurements. The standard side panels can be replaced by bars for improved access to animals. Wall scales offer easy access for cart weighing, and with an optional enclosure kit, they quickly convert for animal weighing. You can customize as needs change.



**ACCU-ARM® Scales**  
Efficient weighing for reduced costs, increased productivity, and improved marketing.

### Get ISO 9001 Standard Quality And Rugged Construction

To maintain tight standards and consistent quality, we manufacture ACCU-ARM Scales under an audited ISO 9001 quality management program. We build scales for long service and dependable accuracy. A painted steel finish is standard for normal service. A hot-dip galvanized finish is available by special order for superior corrosion resistance in humid environments.

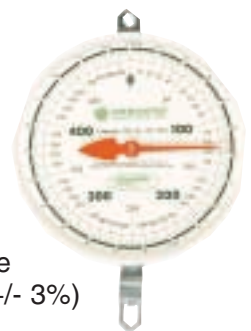
### Digital Meter Talks To Your Computer

Our highly accurate E500R Digital Meter reads, displays, and totals weights in pounds or kilograms and has many other useful functions – including Auto-zero for continuous rezeroing and Quick Freeze for displaying a valid reading until the scale is unloaded. The E500R comes with a standard RS232 port that lets you send weights electronically to your computer database, to our versatile Osborne ID Logger™, or to some other digital recording device. We offer engineering and programming services to help you set it up. You'll get true plug-and-play convenience with our optional, economical ACCU-LINK™ Software Package. It even includes the cable you need to transfer weights directly from the E500R to your PC for spreadsheets, reports, and graphs.



### Mechanical Dials Offer Low-Cost Precision

The ACCU-ARM D500 Series Mechanical Dials are reliable and easy to calibrate. Thanks to the ACCU-ARM lever system with optional hydraulic damping, these dials can be read much more accurately with a live load (about +/- 3%) than dials on conventional scales.





**Mobility** – Use our narrow-body scale to navigate narrow alleys. Choose the wide-body model for larger animals and easier loading. Outfit both with the Wheel Kit option to expedite movement.



**Convenience** – Choose the standard solid-bottom panels or the optional side rails for better access. Move the weigh arm from top center to one side for top access. Configure the scale to meet your needs.

## ACCU-ARM® Portable Scales

### Better By Design

Here's a scale that can go wherever you need it. Just order the optional Wheel Kit for easy mobility. It lets you move up and down alleys – over slotted, mesh, or grated flooring. The big 10-inch diameter rubber wheels turn on ball-bearing hubs. Handles on each side give you ample leverage to lower the wheels into running position or raise them during weighing.

### Set Them Up Your Way

- Mechanical dial with hydraulic damping kit or electronic digital meter
- Manual recording or digital – with ACCU-LINK™
- Side-opening or center-opening gates
- Standard painted steel or special-order hot-dip galvanized finish
- Open or closed top
- Center- or side-mounted weigh arm



**Meter Options** – Select instant read dial or digital meter with RS232 connection. Use our ID Logger™ or our ACCU-LINK™ with your PC for fast weight collection.



**Efficiency** – Wheel Kit option lets one scale work several locations. Handles lower wheels and make light work of moving these heavy-duty scales.



**Selection** – Choose our unique side-opening gates that swing both left and right. Or select optional center-opening gates that can be operated from either end of the scale.

## Specifications For ACCU-ARM® Portable Scales

Model Number	Total Width in cm	Platform Width in cm	Total Length in cm	Basket Height in cm
FS-PSN500	18   46	14   36	60   153	39   99
FS-PSW500	24   61	20   51	60   153	39   99

- Increase total width by 4 in./10 cm. when the Wheel Kit is added to standard scale.
- Clearance height at the top of the weigh meter bracket is 73 in./186 cm.
- Weighing accuracy is  $\pm 1\%$  with the E500R Digital Meter and  $\pm 3\%$  with the Mechanical Dial.
- Maximum recommended load weight for the E500R Digital Meter is 500 lb./227 kg. Call for other applications.

**Call 1-800-255-0316 for information and ordering.**

# ACCU-ARM® Wall Scales

## Easy to Use, Easy to Store

You can mount our versatile ACCU-ARM Wall Scales against a barn wall or wherever handy scale access speeds your work. They stay conveniently out of the way until needed - then fold out fast and easily to weigh roll-on loads. To weigh livestock, just attach the gated animal enclosure. ACCU-ARM Wall Scales are brawny enough to handle 500-pound loads yet trim enough to fold into a compact 5-inch-deep package when not in use. Scale meters and dials remove easily for safekeeping.

**Versatility** - You can tailor Wall Scales to the task at hand. This 24-inch model is set up for roll-on loads, like feed or animal transport carts.



**Fast Conversion** - The optional Animal Enclosure Kit readies the Wall Scale for your livestock.



**Easy Set Up, Easy Access** - The ramps drop into place quickly. Carts and animals load easily.



**Space-Saving Storage** - Wall Scales fold for compact storage, freeing passageways and floor space for other uses.

## Specifications For ACCU-ARM® Wall Scales

Model Number	Total Width in cm	Platform Width in cm	Total Length in cm	Total Length w/Ramps in cm
FS-WSN500	18   46	14.5   37	51   130	79   201
FS-WSW500	24   61	21.5   55	51   130	79   201

- Installation must be level and plumb to avoid binding cantilevered linkages.
- Clearance height including the weight indicator hanging bracket is 70 in./178 cm.
- Weighing accuracy is  $\pm 1\%$  with the E500R Digital Meter and  $\pm 3\%$  with the Mechanical Dial.
- Maximum recommended load weight for the E500R Digital Meter is 500 lb / 227 kg. Call for other applications.

*Farm scales are not certified or licensed for commerce.*

**Request Technical Bulletins to learn more about ACCU-ARM® Scales and our time-saving ACCU-LINK™ Software Package.**



**U.S. Headquarters:** 120 N. Industrial Ave. • PO Box 388 • Osborne, KS 67473 • U.S.A.  
**Telephone:** 1-785-346-2192 • **Fax:** 1-785-346-2194

**Email:** sales@osborne-ind.com • **Web Site:** www.osborne-ind.com

**Euro Office:** Osborne (Europe) Ltd. • Samson Close, Killingworth, Newcastle Upon Tyne, NE12 6DX • United Kingdom  
**Telephone:** 44-(191) 268-5828 • **Fax:** 44-(191) 216-0719 • **Email:** osborne@onyxnet.co.uk

**Asian Office:** Osborne Industries, Inc. (Asia) • Zhongda Square, Room 2406 • 989 Dong Fang Road • Shanghai 200122 China  
**Telephone:** 86-(21) 6248-0991 • **Fax:** 86-(21) 5081-2941 • **Email:** intlsales@osborne-ind.com

**Call 1-800-255-0316 for information and ordering.**