



OSBORNE® Big Wheel® Sow Feeders

S100/S110/S130 SERIES

Manual Adjustment Kit Assembly Instructions

| Part Number | Description |
|----------------|-------------------------------|
| KF-S10016..... | Adjustment Axle (A) |
| KF-S10015..... | Adjustable Feed Washer (B) |
| KF-S10017..... | Adjustment Handle (C) |
| RSM-3413..... | Adjustment Plate (D) |
| RFB-2150..... | 5/16 x 1-1/2" Bolt (2 ea) (E) |
| RFN-5100..... | 1/2" Nut (2 ea) (F) |

| Required Tools | |
|--------------------|---------------------|
| 3/4" wrench (2 ea) | 3/8" wrench |
| 1 1/2" hole saw | 1/2" wrench |
| Drill | Pliers |
| Flat screwdriver | 1/2" socket ratchet |



Assembly Instructions

1. Begin by removing the spring clamp, feed washer, and feed sweep located inside the feed hopper or tube. For feeders with tubes, the tube will have to be removed to gain access to the spring clamp, feed washer, and feed sweep. For feeders with hoppers, these parts may be accessible with your hands and a pair of pliers. See Figure 1.

Figure 1

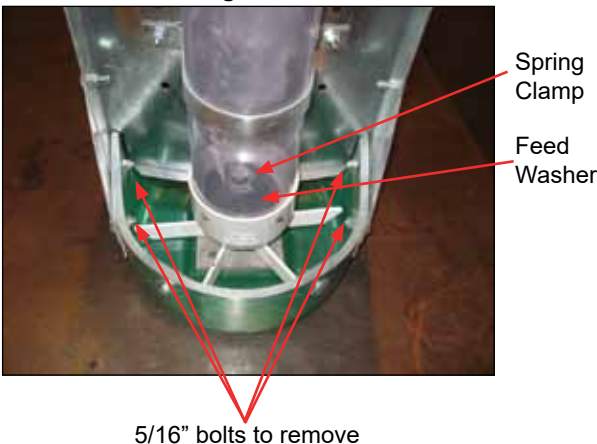
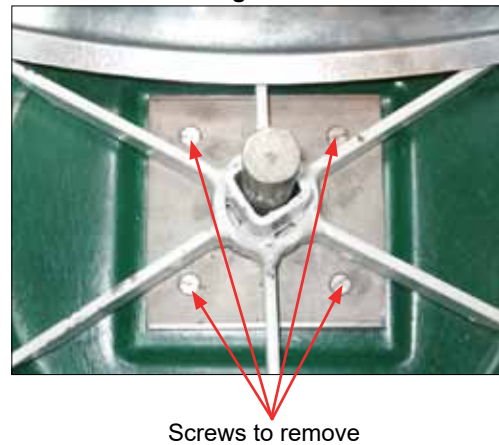
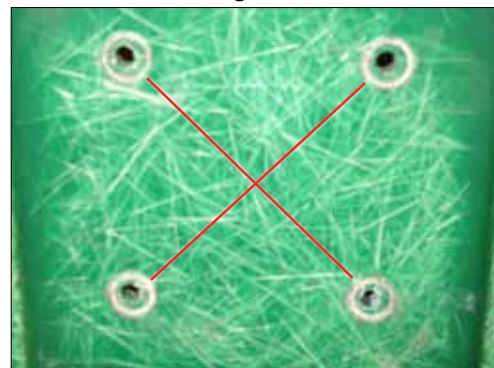


Figure 2



4. With the axle removed, flip the feeder over to expose the bottom of the trough. Using the new adjustment plate as a straight edge, use the flat blade screwdriver to lightly etch an X between the centers of the existing axle plate mounting holes. See Figure 3.

Figure 3



2. Remove the four (4) 5/16" bolts illustrated in the picture above. Removing these bolts will allow the back panel assembly to pivot forward, giving better access to the parts below. Remove the feed wheel and stainless steel washer from the axle.
3. Using a flat blade screwdriver and a 3/8" wrench, remove the four screws that fasten the axle to the trough. See Figure 2. Remove the axle from the feeder trough.

- Using a 1 1/2" hole saw, drill a hole through the fiberglass trough at the center of the X.

Figure 4



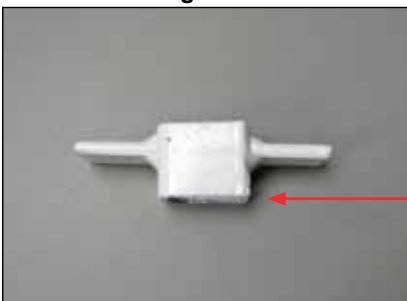
- Once the hole for the new axle plate is drilled, install the new axle onto the feeder trough using the existing screws removed in Step 3. Place the stainless washer and feed wheel onto the new axle. **NOTE:** Not putting the washer under the feed wheel can lead to premature wear on the trough.
- Pull the back panel assembly back into place. Install the adjustment plate (D) to either side of the feeder, using the 5/16 x 1-1/2" bolts (E) and existing nuts. See Figure 5.

Figure 5



- The feed sweep needs to be placed back over the feed wheel. (If your feeder has a hopper, the feed sweep will be placed inside the hopper and onto the axle; if your feeder has a tube, replace the PVC cap and then the feed sweep. Do not install the tube at this time.) The longer side of the square tubing on the feed sweep should be toward the bottom of the feeder. See Figure 6.

Figure 6



This end
down

- Next, place the adjustable feed washer (B) through the axle (A) and thread one of the 1/2" nuts onto the threaded portion below the trough. Slide the adjustment rod (C) through the opening of the adjustment plate (D). Slide the opposite end of the rod onto the threaded portion of the adjustable washer below the trough. Use the second 1/2" nut to tighten the rod onto the plate assembly. Adjust the assembly using the two nuts so that when the handle is in the lowest position on the adjustment plate, the feed washer is resting on the axle. See Figure 7

Figure 7



- The installation of the adjustment mechanism is now complete and the remainder of the feeder can be reassembled. If the feeder has a tube, make sure that the tube is pushed all the way into the PVC cap. Failure to seat the tube fully into the cap will result in too much feed flowing into the trough.