

FEED FLOW CONTROL

Installation Instructions

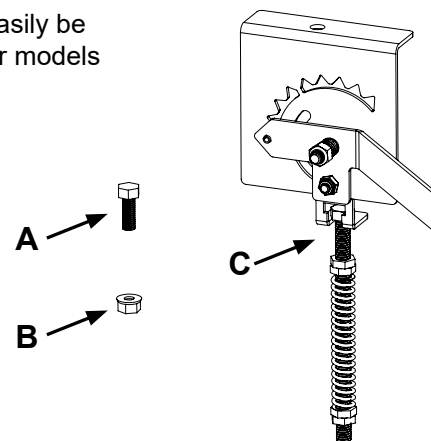
KF-F10024

The Feed Flow Control for Osborne Big Wheel® and FAST Start® feeders can easily be retrofitted to existing feeders with metal cone straps. Cable-style straps on older models will not accept the Feed Flow Control.

Contact Osborne Customer Service for more information.

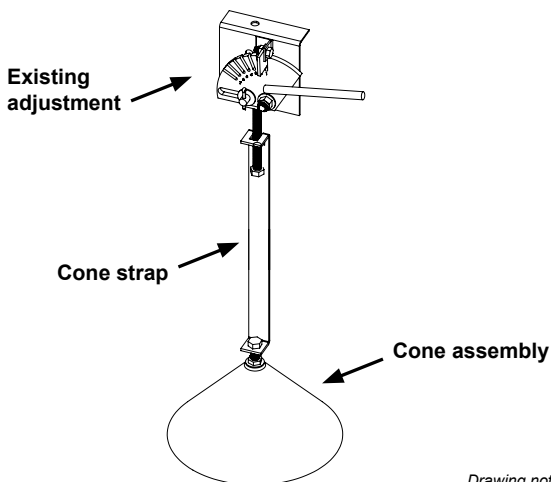
The Feed Flow Control (KF-F10024) includes:

- 5/16 x 7/8-in. bolt (attached to feed flow control)
- 5/16-in. flange hex nut (attached to feed flow control)
- Feed flow control



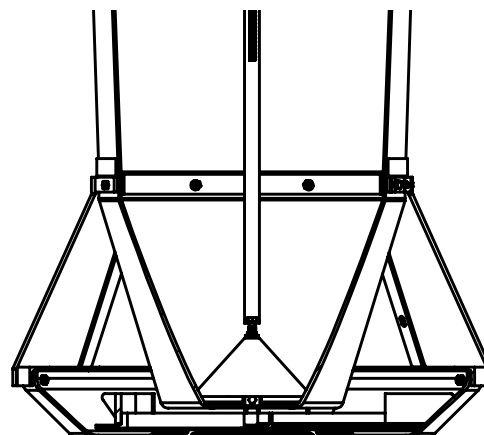
NOTE: FEEDERS MUST BE EMPTY BEFORE BEGINNING INSTALLATION.

- Remove existing feed adjustment hardware, cone assembly and cone strap from feeder and detach cone strap and cone assembly from existing feed adjustment hardware.

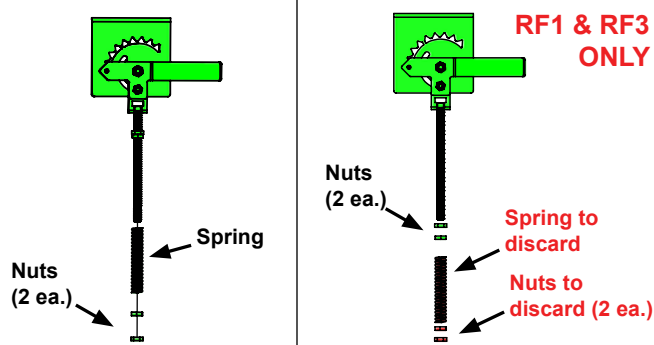


Drawing not to scale

- Replace cone strap and cone assembly on the axle inside feeder.

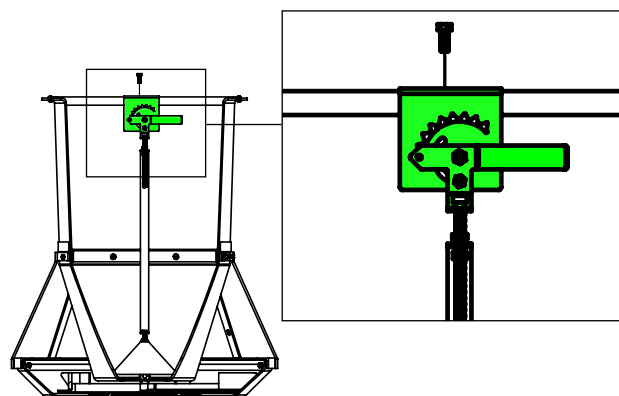


- Set feed flow control to '0'. Remove 5/16 x 7/8-in. bolt and 5/16-in. nut on top of feed flow control. Remove bottom two (2) nuts and spring from feed flow control and set aside.



For Model RF1 (7.5 bu) and RF3 (15 bu), remove all nuts (4 ea.) and spring. Discard two (2) nuts and spring. These parts will not be used and may be discarded.

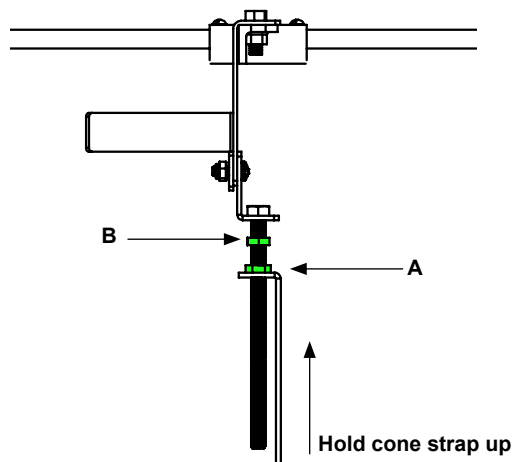
- Attach feed flow control onto crossbar with back side of assembly resting against flat side of crossbar.



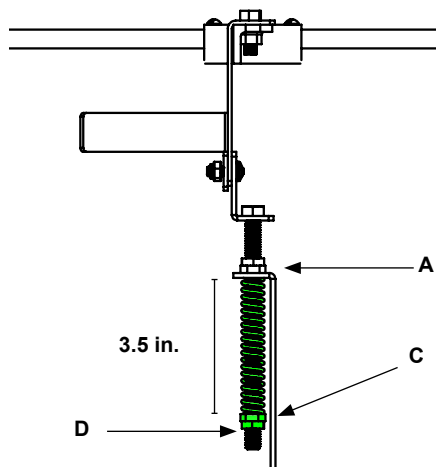
Install using 5/16 x 7/8-in. bolt and 5/16-in. nut removed in previous step.

STEPS 5 & 6 BELOW: ALL OTHER FEEDER MODELS

5. Connect feed flow control and cone strap. Hold cone strap upwards against nut on feed flow control (A), and adjust nut (A) until cone is lightly resting on feed sweep. Tighten second nut (B) against nut (A).



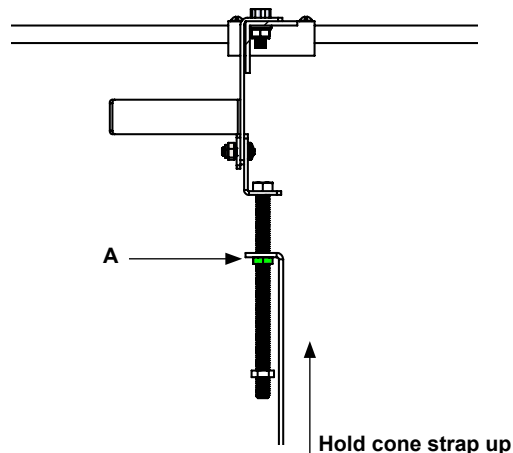
6. Slide feed flow control spring onto bolt from the bottom up. Thread nuts (C & D) behind it.



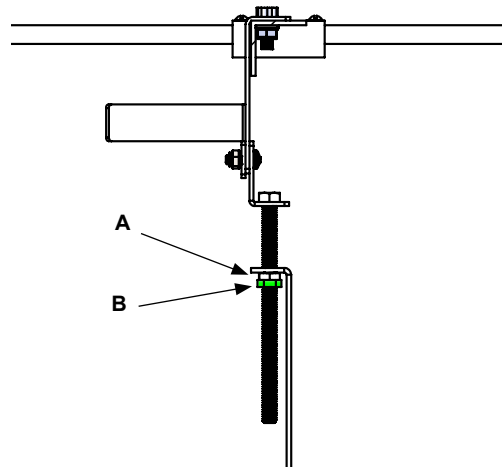
While holding a wrench on nut (A), tighten nut (C) to tension the spring to a length of 3.5-in. Tighten nut (D) against nut (C).

STEPS 5 & 6 BELOW: MODELS RF1 & RF3 ONLY

5. Connect feed flow control and cone strap. Hold cone strap up and thread nut (A) onto bolt on feed flow control. Adjust nut (A) until cone is lightly resting on feed sweep.



6. Tighten second nut (B) against first nut (A).

**ADJUSTMENT AND TRAINING RECOMMENDATIONS**

To train pigs on the feeder, set feed flow control to 1 1/2 to 2 and manually turn feed wheel until feed begins to flow into trough. Manually scoop feed into the trough and fill for first use. As first trough full is eaten, pigs learn through play that the feed wheel dispenses feed. Adjust the cone height with feed flow control as needed. Proper adjustment will vary based upon feed grind, moisture content and animal size.