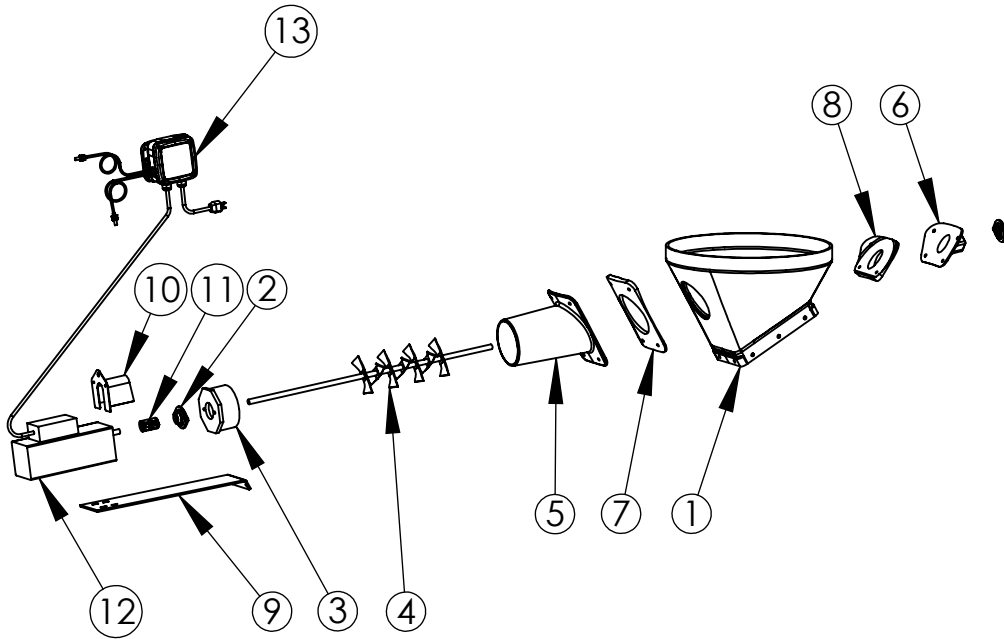


OSBORNE FLOW PRO® FOR 30 DEGREE BOOTS

FB-FP0002 - KIT - BOOT NOT INCLUDED
FB-FP0004 - ASSEMBLY - BOOT INCLUDED



ITEM #	PART #	DESCRIPTION	QTY.
1	KB-FP0013	CLEAR 30 DEG BIN BOOT WITH HOLES	1
2	RXC-0120	MOUNTED BEARING 0.50 ID	2
3	KB-FP0010	GUIDE CAP	1
4	KB-FP0007	30 DEG AGITATOR SHAFT ASSEMBLY	1
5	KB-FP0003	30 DEG GUIDE BOTTOM	1
6	KB-FP0002	30 DEG GUIDE TOP	1
7	KB-FP0005	30 DEG SPACER BOTTOM	1
8	KB-FP0004	30 DEG SPACER TOP	1
9	KB-FP0009	30 DEG MOTOR MOUNT	1
10	SB-FP0004	MOTOR CABLE BRACKET	1
11	RFM-5045	SHAFT COUPLING 0.5 ID X 1.125 OD W/KEYWAY	1
12	REM-3000	MOTOR 1/6 HP GEARMOTOR	1
13	KB-FPC001	CONTROLLER	1

NOTE: ADDITIONAL MISC. HARDWARE LISTED ON NEXT PAGE.



www.osbornelivestockequipment.com
 © 2023 Osborne Industries, Inc.

OSBORNE FLOW PRO® FOR 30 DEGREE BOOTS

FB-FP0002 - KIT - BOOT NOT INCLUDED
FB-FP0004 - ASSEMBLY - BOOT INCLUDED

PART #	DESCRIPTION	QTY
RFB-0802	10-32X1/2ZP HHCS W/LOCKING WASHER	6
RFB-1301	HHCS 1/4X3/4 SS	4
RFB-1670	HHCS 1/4 X 1 3/4 ZP FULLY THREADED	8
RFB-1750	EYEBOLT 1/4-20 X 2.5" LENGTH	1
RFM-2015	CABLE 3/32 GALV	10
RFM-2016	CABLE CLAMP 3/32 ADJUSTABLE	2
RFM-6301	GROMMET 1/4" ID 1/16" GROOVE	1
RFN-1600	NUT 1/4X1 WELL NEOPRENE	1
RFN-1605	WELLNUT 1/4-20 GRIP .25-.47 RUBBER	8
RFS-0820	SCREW #14X1 SELF DRILLING #3 POINT	2
RFW-0901	WASHER 10 SS	4
RFW-1301	WASHER 1/4 SPRING LOCK SS	4
RFW-1700	WASHER 1/4X1 1/4 FENDER ZP	1
RXG-1001	HALF GASKET 6.25 OD X 4.75 ID X .25 TH	2
RXG-1002	HALF GASKET 3.125 OD X 2.125 ID X .25 TH	2

