



OSBORNE[®]

EMPLOYEE OWNED. AMERICAN MADE.



AGRI-AIDE[®]

VENTILATION EQUIPMENT

World-class, custom-engineered ventilation systems for animals and the people who care for them.

osbornelivestockequipment.com

Total ventilation to meet your needs.

AGRI-AIDE Ventilation from Osborne brings together solutions based on over 40 years of practical experience in creating comfortable, productive animal environments. We offer equipment options to match any ventilation requirement and each component is built to provide long-lasting, trouble-free service.

Utilizing an integrated combination of exhaust fans, fresh air inlets, circulation fans, and reliable system controls, custom-designed fresh air exchange systems can perfectly match your building and provide the fresh air needed for the animals you manage.



Get the AGRI-AIDE advantage.



OPTIMIZE ANIMAL ENVIRONMENTS

Maintain animal environments with fresh air for both animals and their caretakers.



KEEP ANIMALS HEALTHY

Expel dangerous and toxic gases to keep animals healthy and productive.



GREAT FOR ALL ANIMAL BUILDINGS

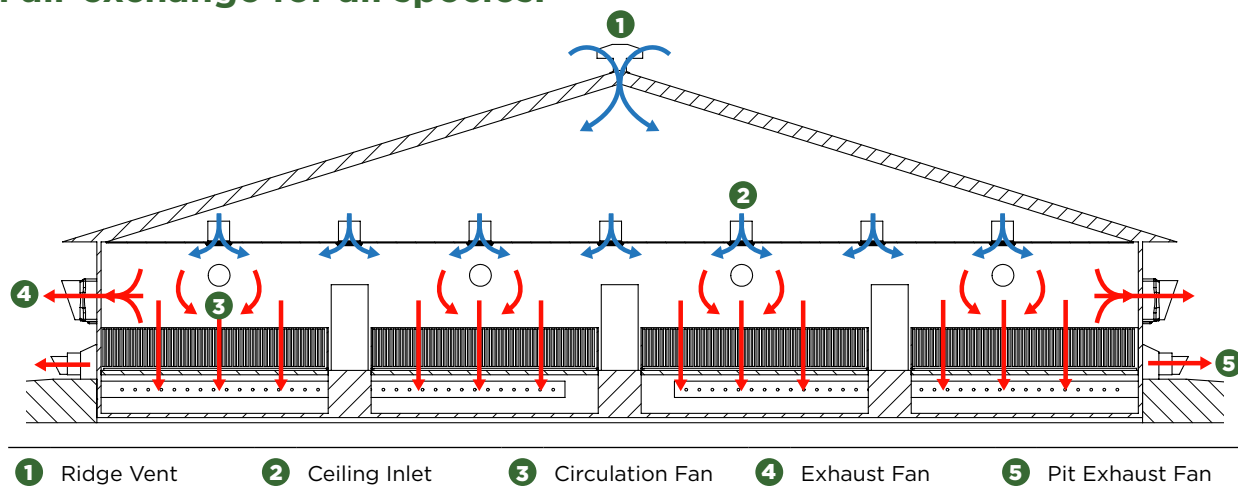
AGRI-AIDE designs are adaptable to all livestock buildings, kennels, and more.



ULTRA-STRONG COMPONENTS

No-sag, no-warp fiberglass-reinforced housings easily withstand harsh conditions.

Fresh air exchange for all species.



Whether you manage dogs, pigs, poultry, dairy, or other species, fresh air is vital to the health of your animals, your staff, and the financial health of your business. You can count on our experience with all types of buildings and animals to help you develop a complete ventilation plan or improve your existing system. Whatever your needs, we can deliver an integrated combination of exhaust fans, fresh air inlets, circulation fans, and reliable automatic controls that perfectly match your building.

Research with our air movement laboratory, our Demonstration Farm field tests, and our collaboration with leading universities have enabled us to offer you an efficient combination of ventilation components. Let us show you how we can simultaneously improve the air quality in your buildings and reduce your operating costs.

AGRI-AIDE® Ventilation



Custom-designed, world-class ventilation systems.

The design of a successful ventilation system involves several considerations. Osborne's ventilation engineers custom design each total ventilation system based on location, building design and size, and species of animal - with absolutely no obligation to purchase! Our ventilation specialists use data collected over several decades to size each system for adequate air exchange by species.

Trust Osborne's 40+ years of designing and supplying world class ventilation systems to reduce illness, expel condensation, reduce moisture, and minimize gas build-up to keep your animals, their caretakers, and even your customers productive and healthy. Contact one of our ventilation experts today to get started on your total ventilation solution.



EXHAUST FANS

AGRI-AIDE Slant-Wall and Panel Exhaust Fans efficiently expel condensation and foul air from animal buildings.



CIRCULATION FANS

Power-move air through animal confinement buildings with Super-Jet Circulation Fans by creating a jet stream of beneficial air.



FRESH AIR INLETS

Corrosion-resistant inlets, including ridge vents, wall inlets, and ceiling inlets bring in fresh air with no drafts to benefit animals.



FAN CONTROLS

Controls from Osborne range from manual, variable speed fan controls to system-integrated controls for many stages.



FAN ACCESSORIES

Customize your ventilation system with fan hoods, shutters, and more, all manufactured with corrosion-resistant materials.

AGRI-AIDE® Slant-Wall Exhaust Fans

- **EXPUL CONDENSATION & GASES** • The design of the Slant-Wall fan exhausts gases and condensation while keeping interior walls free of obstructions.
- **HEAVY DUTY MOTORS** • Totally enclosed, thermally protected, auto reset motors with pre-lubricated ball bearings are dual voltage and variable speed.
- **POLY PROPELLERS & PLATED GUARDS** • Quiet running propellers with replaceable blades stay perfectly balanced. Nickel-plated motor mounts and blade guards have a radial design for less air restriction.
- **EASY-CLEAN SHUTTERS** • Lightweight PVC shutter blades and fiberglass pivot rods are fully corrosion resistant.
- **FIBERGLASS-REINFORCED HOUSINGS** • Fan housings are non-porous, smooth inside and out, and absolutely rigid, never warping or heat-sagging like poly housings.



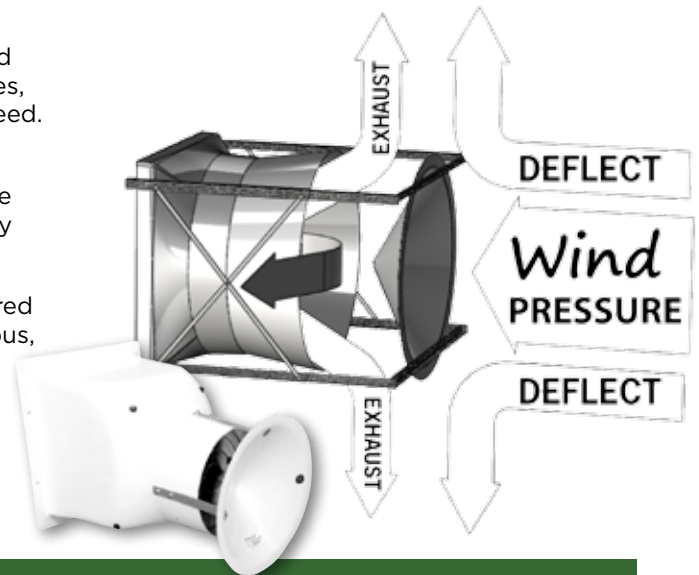
AGRI-AIDE® SLANT-WALL EXHAUST FANS

Catalog Number	Fan Type	Normal Speed (RPM)	Voltage (volts)	Power		Fan Diameter		Recommended Time Delay Fused Switch		Shipping Weight		Capacity
				HP	kW	in	mm	120V	240V	lbs	kg	0.125 in. w.g. CFM
FV-SW0801V	Variable Speed	1725	120/240	1/25	0.03	8	203	3A	2A	19	8.6	97
FV-SW0802V	Variable Speed	1725	120/240	1/25	0.03	8	203	3A	2A	19	8.6	117
FV-SW1203V	Variable Speed	1725	120/240	1/25	0.03	12	305	3A	2A	31	14.1	393
FV-SW1207V	Variable Speed	1725	120/240	1/25	0.03	12	305	3A	2A	31	14.1	723
FV-SW1211V	Variable Speed	1725	120/240	1/6	0.12	12	305	4A	2A	35	15.9	1221
FV-SW1619V	Variable Speed	1725	120/240	1/6	0.12	16	406	4A	2A	45	20.4	2039
FV-SW1624V	Variable Speed	1725	120/240	1/4	0.19	16	406	8A	4A	49	22.2	2540
FV-SW2030V	Variable Speed	1725	120/240	1/4	0.19	20	508	8A	4A	60	27.2	3026
FV-SW2045V	Variable Speed	1725	120/240	1/2	0.37	20	508	14A	7A	64	29.0	4352
FV-SW2460V	Variable Speed	1725	120/240	1/2	0.37	24	610	14A	7A	74	33.6	5741
FV-M3611V	Variable Speed	850	120/240	1/2	0.37	36	914	14A	7A	148	67.1	7765

Note: All fans are direct drive, single phase, 60 Hz.

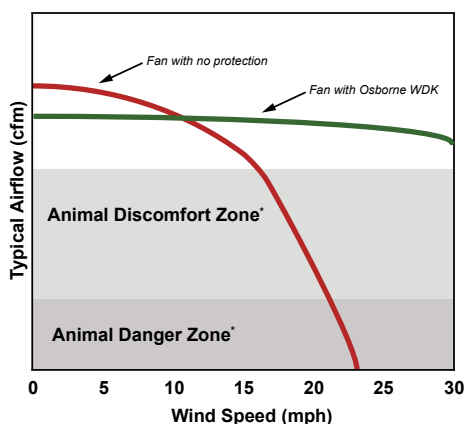
AGRI-AIDE® Wind Diverter Kits

- **DEFLECT WIND PRESSURE** • Block on-coming wind pressure on exhaust fans to maintain ventilation rates, especially important when fans run on minimum speed.
- **ACCELERATE EXHAUST** • The design of the Wind Diverter Cone not only blocks wind pressure, but the on-coming wind stream assists with exhaust rates by “sweeping” exhausted air with it as it is deflected.
- **FIBERGLASS DIVERTER CONE** • Exclusive engineered fiberglass-reinforced composite cones are non-porous, and absolutely rigid.
- **ADAPTABLE TO ANY FAN** • Wind Diverters from Osborne fit fans of virtually all manufacturers, including fans with round or square hoods.



AGRI-AIDE® WIND DIVERTER KITS

Catalog Number	Wind Diverter Diameter		Largest Round Fan Hood Protected		Largest Square Fan Hood Protected		Shipping Weight	
	in	mm	in	mm	in	mm	lbs	kg
FV-WDK008	11.75	298	9.75	248	6.75	171	4.0	1.8
FV-WDK012	17.00	432	15.00	381	10.50	267	5.0	2.3
FV-WDK016	22.00	559	20.00	508	14.00	356	6.0	2.7
FV-WDK020	25.00	635	23.00	584	16.25	413	8.0	3.6
FV-WDK024	29.00	737	27.00	686	19.00	483	12.0	5.4
FV-WDK036	40.00	1016	38.00	965	26.75	679	24.0	10.9
FV-WDK058	58.00	1473	56.00	1422	41.00	1041	75.0	32.0



Wind effect on fan output is preventable.

Exhaust fans with no protection from on-coming wind pressure can have devastating effects on animal health and comfort. At oncoming wind speeds of just 20 MPH, exhaust rates suffer so much that animals are subjected to stress and discomfort caused by reduced ventilation rates. As wind speeds reach 25 MPH, impact on exhaust rates can be devastating and even result in loss of life.

* May vary with temperature, humidity, animal density, species, and ventilation system.

Panel Exhaust Fans

- **COST-EFFECTIVE EXHAUST** • Basic panel exhaust fans are a cost-saving alternative to traditional exhaust fans, featuring smaller housings and no blade guard or shutter.
- **HEAVY DUTY MOTORS** • Totally enclosed, thermally protected, auto reset motors with pre-lubricated ball bearings are dual voltage and variable speed.
- **POLY PROPELLER & PLATED MOTOR MOUNT** • Quiet running propellers with replaceable blades stay perfectly balanced. Nickel-plated guards have a radial design for less air restriction.
- **FIBERGLASS-REINFORCED HOUSINGS** • Exclusive, engineered housings are non-porous and absolutely rigid, never warping or heat-sagging like poly housings.
- **OPTIONAL ACCESSORIES** • Optional fan accessories, including front blade guards and weather hoods, are available for added protection.



AGRI-AIDE® BASIC PANEL EXHAUST FANS

Catalog Number	Fan Type	Normal Speed (RPM)	Voltage (volts)	Power		Fan Diameter		Recommended Time Delay Fused Switch		Shipping Weight		Capacity 0.125 in. w.g.
				HP	kW	in	mm	120V	240V	lbs	kg	CFM
FV-FP1203V	Variable Speed	1725	120/240	1/25	0.03	12	305	3A	2A	24	10.9	637
FV-FP1207V	Variable Speed	1725	120/240	1/25	0.03	12	305	3A	2A	24	10.9	1109
FV-FP1211V	Variable Speed	1725	120/240	1/6	0.12	12	305	4A	2A	25	11.3	1587
FV-FP1619V	Variable Speed	1725	120/240	1/6	0.12	16	406	4A	2A	30	16.3	2353
FV-FP1624V	Variable Speed	1725	120/240	1/4	0.19	16	406	8A	4A	34	15.4	2878
FV-FP2030V	Variable Speed	1725	120/240	1/4	0.19	20	508	8A	4A	42	19.1	3368
FV-FP2045V	Variable Speed	1725	120/240	1/2	0.37	20	508	14A	7A	45	20.4	5040
FV-FP2460V	Variable Speed	1725	120/240	1/2	0.37	24	610	14A	7A	56	25.4	5633
FV-FP3611V	Variable Speed	850	120/240	1/2	0.37	36	914	14A	7A	86	39.0	7330

Note: All fans are direct drive, single phase, 60 Hz. Optional front blade guard is available. Call Osborne Customer Service for ordering information.

Super-Jet™ Circulation Fans

- **CREATE HIGH JET VELOCITY** • Power-move air with a jet-stream of beneficial air movement, drawing in and blending adjacent air to alleviate heat stress and mix fresh air.
- **ELIMINATE CONDENSATION** • Keep pens dry, especially during winter months when exhaust fans run at minimum speed, with gentle air mixing.
- **HEAVY DUTY MOTORS** • Totally enclosed, thermally protected, auto reset motors with pre-lubricated ball bearings are dual voltage and variable speed.
- **POLY PROPELLER & PLATED MOTOR MOUNT** • Quiet running propellers with replaceable blades stay perfectly balanced. Nickel-plated guards have a radial design for less air restriction.
- **FIBERGLASS-REINFORCED HOUSINGS** • Exclusive, engineered housings are non-porous and absolutely rigid, never warping or heat-sagging like poly housings.
- **OPTIONAL OSHA-COMPLIANT GUARDS** • For sensitive applications, select Super-Jets with stainless steel, OSHA-compliant guards, motor mounts, and fully corrosion-resistant fasteners.



AGRI-AIDE® SUPER-JET CIRCULATION FANS

Catalog Number	Fan Type	Normal Speed (RPM)	Voltage (volts)	Power		Fan Diameter		Recommended Time Delay Fused Switch		Shipping Weight		Throw Distance	
				HP	kW	in	mm	120V	240V	lbs	kg	ft	m
FV-S1620V	Variable Speed	1725	120/240	1/6	0.12	16	406	4A	2A	33	15.0	35	10
FV-S2030V	Variable Speed	1725	120/240	1/4	0.19	20	508	8A	4A	44	20.0	45	13
FV-S2460V	Variable Speed	1725	120/240	1/2	0.37	24	610	14A	7A	58	26.3	80	24

AGRI-AIDE® SUPER-JET CIRCULATION FANS (WITH OSHA-COMPLIANT MOTOR MOUNTS/BLADE GUARDS)

Catalog Number	Fan Type	Normal Speed (RPM)	Voltage (volts)	Power		Fan Diameter		Recommended Time Delay Fused Switch		Shipping Weight		Throw Distance	
				HP	kW	in	mm	120V	240V	lbs	kg	ft	m
FV-S1621V	Variable Speed	1725	120/240	1/6	0.12	16	406	4A	2A	33	15.0	30	9
FV-S2031V	Variable Speed	1725	120/240	1/4	0.19	20	508	8A	4A	44	20.0	40	12
FV-S2461V	Variable Speed	1725	120/240	1/2	0.37	24	610	14A	7A	58	26.3	75	23

AGRI-AIDE® Auto-MAX® Fresh Air Inlets

- **TOTALLY AUTOMATIC** • Factory calibrated, fully automatic operation all year long for draft-free mixing of incoming air.
- **REAL FULL-RANGE PERFORMANCE** • University tests prove air velocities maintain 800-1000 FPM at all static pressures - even during wintertime lows.
- **ELIMINATE SEASONAL ADJUSTMENTS** • Seasonal adjustments of weights or springs are never needed with the automatic operation of Auto-MAX.
- **CORROSION-RESISTANT CONSTRUCTION** • Fully corrosion-resistant construction with materials like structural foam and non-porous fiberglass-reinforced composites.



Auto-MAX® CEILING INLET

Catalog Number	Overall Dimensions L x W x H		Rough Opening L x W		Shipping Weight		Capacity 0.125 in. w.g.
	in	mm	in	mm	lbs	kg	CFM
FV-CI1500	22.25 x 22.25 x 15	565 x 565 x 381	20.25 x 20.25	514 x 514	10	4.5	1127

A 17.25" (439 mm) diameter hole can be the rough opening for ceilings made of wood or comparable type smooth material capable of holding a screw. Optional baffle closure kit (KV-CI1506) available. Contact Osborne for ordering information.

Auto-MAX® WALL INLET

Catalog Number	Overall Dimensions L x W x H		Rough Opening W x H		Shipping Weight		Capacity 0.125 in. w.g.
	in	mm	in	mm	lbs	kg	CFM
FV-WI1500	25 x 26.5 x 24	635 x 673 x 610	22.5 x 12.75	572 x 324	20	9.1	647

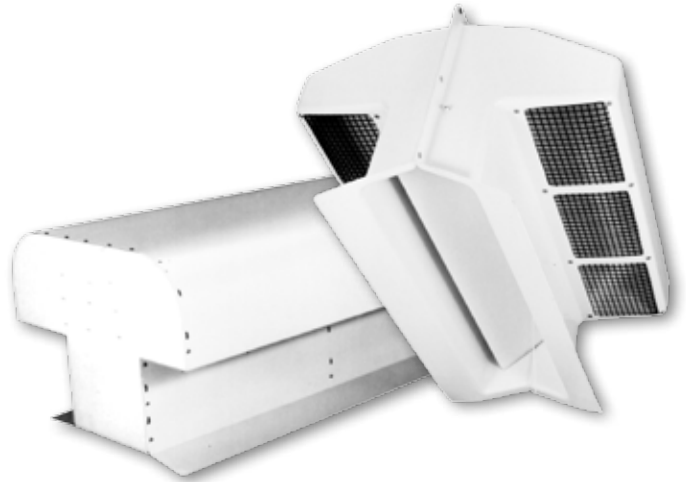
Auto-MAX® HALLWAY INLETS

Catalog Number	Overall Dimensions L x W x H		Rough Opening W x H		Shipping Weight		Capacity 0.125 in. w.g.
	in	mm	in	mm	lbs	kg	CFM
FV-HI1500	24.75 x 8 x 18.5	629 x 203 x 470	22.5 x 15.5	572 x 394	6	2.7	1257
FV-HI2000	48 x 8 x 14	1219 x 203 x 356	46 x 12	1168 x 305	13	5.9	1963

AGRI-AIDE® Ventilation

AGRI-AIDE® Ridge Vents

- **PROVIDE LOFT OR ATTIC AIR** ● Provide fresh air in attics or loft spaces for tempering before entering the animal area. Plastic screens over vent openings prevents bird entry.
- **CHOICE OF CONSTRUCTION** ● Choose cost-effective wood/metal inlets with baked white enamel exterior finish in multiple sizes or the totally corrosion-resistant fiberglass cupola.
- **EASY INSTALLATION** ● Ridge vents all include roof flashing for easy, watertight installation.
- **USE AS INLET OR OUTLET** ● Owing to the composite construction, the fiberglass cupola can be used as an inlet or outlet, withstanding air with high moisture or corrosive gases. Metal/wood cupolas are used as air inlets.



AGRI-AIDE® FIBERGLASS ROOF CUPOLA

Catalog Number	Application	Overall Dimensions L x W x H		Rough Opening L x W		Shipping Weight		Max Airflow
		in	mm	in	mm	lbs	kg	CFM
FV-FC3000	Intake or Exhaust	50 x 36 x 25.75	1270 x 914 x 654	46 x 12	1168 x 305	40	18.1	3000

Optional adjustable insulated damper kit (KV-FC3100) also available. Contact Osborne for ordering information.

AGRI-AIDE® METAL/WOOD ROOF CUPOLAS

Catalog Number	Application	Overall Dimensions L x W x H		Rough Opening L x W		Shipping Weight		Max Airflow
		in	mm	in	mm	lbs	kg	CFM
FV-MC1224	Intake	24 x 25 x 18.25	610 x 635 x 464	22.5 x 12	527 x 305	30	13.6	1500
FV-MC1248	Intake	48 x 25 x 18.25	1219 x 635 x 464	46.5 x 12	1181 x 305	49	22.2	3000
FV-MC1272	Intake	72 x 25 x 18.25	1829 x 635 x 464	70.5 x 12	1791 x 305	71	32.2	4500
FV-MC1296	Intake	96 x 25 x 18.25	2438 x 635 x 464	94.5 x 12	2400 x 305	87	39.5	6000



“

[Our ventilation system] works fantastic!
It keeps it nice and fresh in our kennel.

— Darin B., Ackley, Iowa

”

AGRI-AIDE® Ventilation Accessories



PVC Shutters

Fully corrosion-resistant AGRI-AIDE PVC Shutters are available to fit any size opening, and are standard on all Slant-Wall Exhaust Fans. Manufactured with non-porous, exterior-grade, replaceable PVC blades, PVC frames, and fiberglass pivot rods, there is absolutely nothing to corrode or rust, providing years of trouble-free service.

Contact Osborne Customer Service for a complete list of stock sizes, custom, made-to-order shutters and ordering information.

Weather Hoods

AGRI-AIDE Weather Hoods are designed to be used as a cover to protect fans or as a transition for pit ventilation. Fully rigid, non-porous, fiberglass-reinforced composite construction is smooth and will never become brittle in the cold or warp or sag in the heat like other cheap plastics.

Contact Osborne Customer Service for detailed specifications and ordering information.



Pit Fan Enclosure

For applications with pit ventilation, the AGRI-AIDE Pit Fan Enclosure accepts most 8-16 in. exhaust or high pressure fans. All molded fiberglass construction with a bonded back surface, ensures toxic gases from the pit do not cause corrosion on building siding before it is exhausted.

Contact Osborne Customer Service for detailed specifications and ordering information.

AGRI-AIDE® Ventilation Controls

Simple Manual & Thermostatic Controls



**SINGLE-STAGE
THERMOSTATIC CONTROL**

FE-00SSTW

Control exhaust or circulation rates based on ambient temperature with simple on/off control of single fans.

16 Amps at 110V/12 Amps at 220V
40° - 100° F (4° - 38° C) temp range
Watertight enclosure



**MANUAL MOTOR
SPEED CONTROL**

FE-00MSCS-115 (110V)
FE-00MSCS-230 (220V)

Manually control exhaust or circulation fan speed with an easy-set dial to optimize ventilation quality.

8 Amps at 110V/6 Amps at 220V
Watertight enclosure



**AUTOMATIC VARIABLE
SPEED CONTROL**

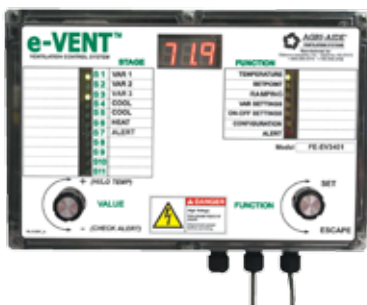
FE-00AV11

Automatically and thermostatically control several fans of the same horsepower. Set fans to low speed continuous fan operation below set-point or fan shut-off below set-point.

11 Amps at 110/220V
35° - 95° F (2° - 35° C) temp range
Watertight enclosure

Multi-Stage Integrated Controls

e-VENT™ MULTI-STAGE INTEGRATED CONTROLS



Control exhaust, cooling and circulation fans, heating, curtains, alarm, and more with the e-VENT family of customizable controls. Up to 11 different stages - with expansion options - makes this control versatile enough to meet virtually any ventilation requirement. Pay only for the features or stages you need.

110/240V, 10 Amps per stage
32° - 112° F (0° - 44° C) temp range
Watertight enclosure

**Contact Osborne Customer Service for
detailed specifications or to design a control.**



“ Controlled air circulation with fans from Osborne has made a world of difference in my barn. Not only does it provide high velocity air movement for animal cooling in hot weather, but using high velocity ceiling-level circulation has completely eliminated condensation build up in my pens during the winter. Animal illness has reduced and I would definitely recommend implementing an AGRI-AIDE system no matter what animals you raise.

— John G., Harlan, KS

The system is awesome. The fans work as desired. It took me a little while, but now I am accomplished with the e-VENT controller, adjusting the set point, etc. so the boss gets the temperatures she likes for the dogs. We have lots of fresh air, completely solving our kennel cough problems and the urine and chlorine fumes that used to plague us. Using the high temperature override to turn up the fans when volunteers are cleaning on cold or hot days works like a charm. Your products are excellent and the performance exceeds our expectations.

— Bruce R., Grand Prairie, TX ”

Premiere ventilation for pet professionals.



Patent and trademark information available at osborne-ind.com/ip.

Eliminate kennel cough, dispel irritating gases, and improve the health of your animals and employees with a custom-designed fresh air exchange system for kennels, pet stores, and other animal care facilities, relying on Osborne's 40+ years of experience in creating healthy environments in animal confinement facilities.

Using an integrated combination of exhaust and circulation fans, fresh air inlets, and system controls, you can trade the toxic gases, odors, and moisture in your facility for fresh, clean, outside air.

Take it from countless AGRI-AIDE customers who immediately recognize a drop in respiratory illnesses after installing a system, the premiere choice for mechanical ventilation is a custom-designed fresh air exchange system from Osborne.

