



58-in. Wind Diverter Kit

Installation Instructions

FV-WDK058

Osborne AGRI-AIDE Wind Diverters are packaged carefully and compactly to ensure their safe arrival at minimum cost. Each part was quality inspected prior to shipment and each carton was carefully packed to ensure that all necessary parts were present for the assembly.

UNPACKING

Upon receiving your shipment, check the cartons for in transit handling damage. ALERT THE DELIVERING CARRIER IMMEDIATELY if damage is discovered. Continue unpacking only after the carrier has acknowledged the damage and potential loss of contents.

NOTICE

All loss or damage in transit is the responsibility of the delivering carrier, NOT OSBORNE INDUSTRIES. To protect your rights in the event of damage or loss, **sign the delivery waybill only after the carrier has acknowledged in writing that damage or loss has occurred.** In the event that damage is revealed only after unpacking is complete, notify the delivering carrier immediately and request an inspection of the damaged merchandise before proceeding.

The Osborne 58-in. Wind Diverter Kit (WDK) fits all models of large fans. Adjustable, hot-dip galvanized brackets with zinc-plated hardware attach the Wind Diverter directly to the side of your facility.

ASSEMBLY INSTRUCTIONS

1. Locate the wall mount brackets on the outside building wall as shown in **Figure 1** with a 50-in. vertical spacing centered about the fan. Any horizontal spacing up to 72-in. can be used as needed to locate the brackets on the wall. Firmly attach the brackets to the building wall with 1/2-in. bolts or lag screws (not provided).

FIGURE 1

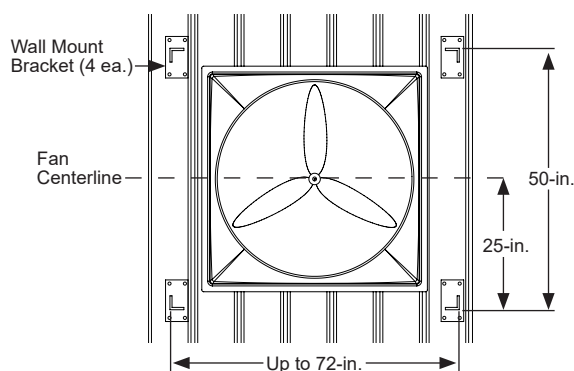


TABLE 1

FAN WITHOUT DISCHARGE CONE

Fan Exit Diameter (in.)	Required "X-Distance" (in.)
42 to 47	24
48 to 51	25
52 to 55	26
56 to 60	27
FAN WITH DISCHARGE CONE	
42 to 60	15-1/2

Parts List

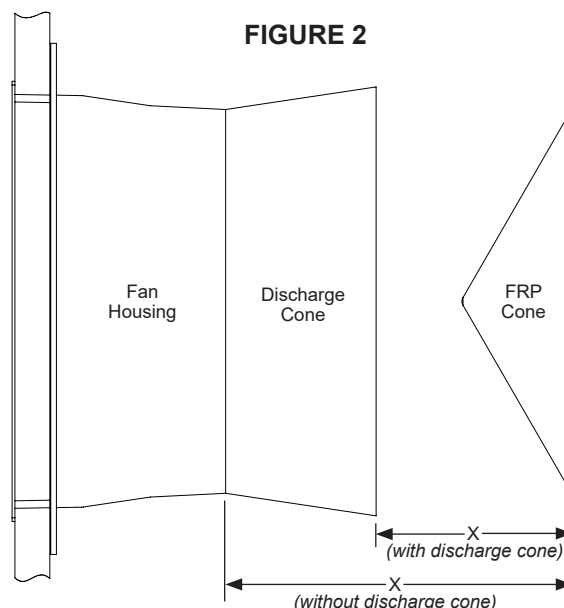
Part Number	Description	Qty
SV-AE9120	58-in. wind diverter cone, FRP	1
KV-AE9120	Wall mount, top-right or bottom-left	2
KV-AE9121	Wall mount, top-left or bottom-right	2
SV-AE9125	Cross brace, 60-in.	4
RSA-1010	Galvanized angle, 2-1/4 x 1-1/2 x 72-in.	2
RSA-1009	Galvanized angle, 2-1/4 x 1-1/2 x 48-in.	8
RLX-0618	Parts packing inspection list	1
SV-AE9126	Bolt kit (includes items below)	1
RFB-2049	5/16 x 5/8-in. bolt	46
RFB-2050	5/16 x 7/8-in. bolt	8
RFN-2300	5/16 flange nut	54
RFW-2370	5/16 x 1-1/2-in. fender washer	8
RLX-0656	58-in. WDK instructions	1

Required Tools

Cordless Drill	5/16-in. Drill Bit
1/2-in. Drive Ratchet	1/2-in. Socket
5/8-in. Socket	5/16-in. Socket
5/8-in. Wrench	5/16-in. Wrench
Framing Square	Bubble Level

2. Refer to **Table 1** (at left below) to choose the "X-distance" required for proper operation of the Wind Diverter Kit (WDK) with your fan. The "X-distance" is measured from the FRP (Fiberglass Reinforced Plastic) cone to the exit end of the fan as shown in **Figure 2** below.

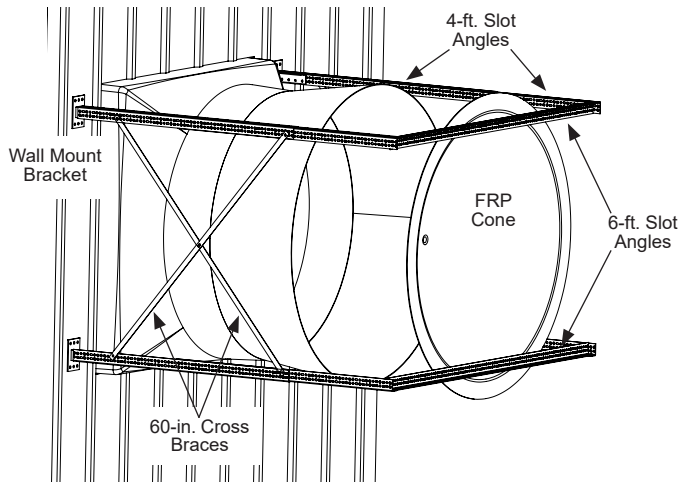
FIGURE 2



P.O. Box 388 • Osborne, KS 67473 U.S.A.
Phone: 1-800-255-0316 • Fax: 1-785-346-2194
sales@osborne-ind.com • www.osbornelivestockequipment.com

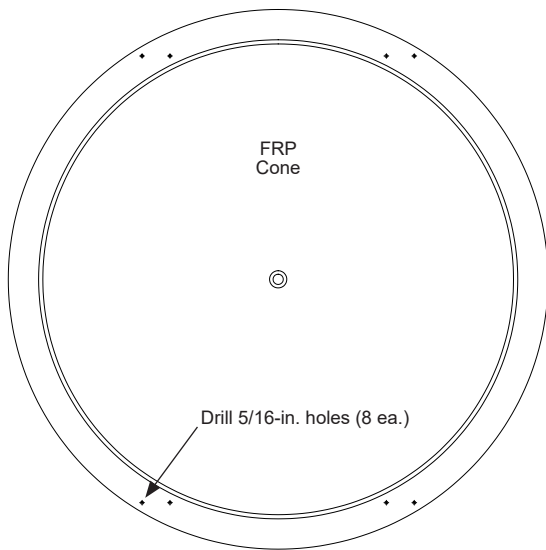
3. Overlap the 4-ft. slot angles and attach to the wall mount brackets as shown in **Figure 3** using the 5/16 x 5/8-in. bolts and 5/16-in. nuts provided. Do not tighten.

FIGURE 3



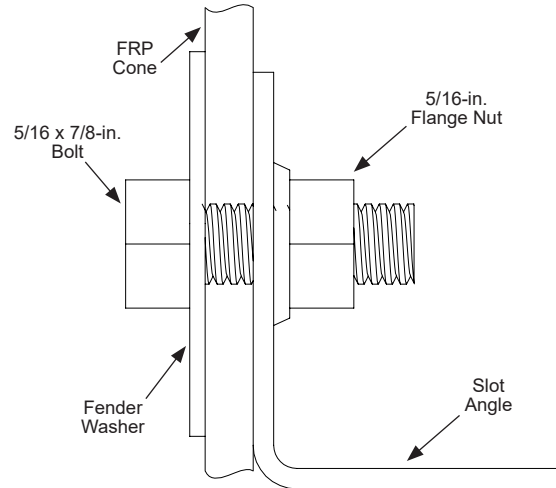
4. Attach the 6-ft. slot angles to the 4-ft. slot angles as shown in **Figure 3** using the 5/16 x 5/8-in. bolts and 5/16-in. nuts provided. Do not tighten.
5. Drill eight (8) 5/16-in. holes through the cone at the indented markings on the part as shown in **Figure 4**. Masonry drill bits are recommended as standard bits rapidly become dull when used on fiberglass.

FIGURE 4



6. Attach the FRP cone to the 6-ft. slot angles as shown in **Figure 3**. Follow the attachment diagram in **Figure 5** using the 5/16 x 7/8-in. bolts, 5/16-in. nuts and 5/16-in. washers provided. Do not tighten.

FIGURE 5



WARNING:

Do not overtighten bolts on fiberglass cone as damage may occur.

7. Measure the "X-distance" from the cone to the exit-end of the fan. Adjust the brackets if needed to locate the cone at the proper "X-distance" as instructed in **Table 1**.
8. Use a framing square and a bubble level to square the slot angle frame. Use temporary support to hold the frame in the final desired position. Measure the "X-distance" again and adjust as needed.
NOTE: A wooden 2 x 4 placed between the ground and the frame works well for temporary support.
9. Attach the 60-in. cross bracing as shown in **Figure 3** using the 5/8-in long bolts and nuts provided.
10. Firmly tighten all bolts. Remove the temporary support.

