

DAILY WEIGH™ SOFTWARE

Osborne Daily Weigh™ Software manages the data for your Weight Watcher™ growth management system.

Daily Weigh Software accesses, stores and displays the information collected by one or more Osborne Survey Scales. You can review growth curves and average daily gain information and much more with *Daily Weigh Software*.

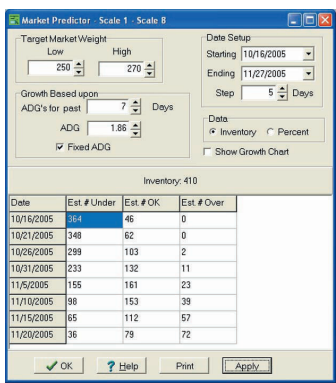
Boost your decision making with *Daily Weigh Software*. The Weight Watcher growth management system weighs each pig each day. *Daily Weigh Software* utilizes real-time data collected by the Survey Scales to generate reports with accurate, real-time information.

Track individual pig performance with optional *Daily Weigh II* features. Producer's requiring detailed individual pig performance can purchase and install optional *Daily Weigh II* features. Survey Scales must be equipped with the antenna option and pigs must be tagged with radio frequency identification (RFID) tags to utilize this optional feature.

As an animal visits the scale, information defining the pig ID, visit time, visit duration and animal weight is recorded. This optional Daily Weigh II feature allows for detailed review and evaluation of individual pigs.

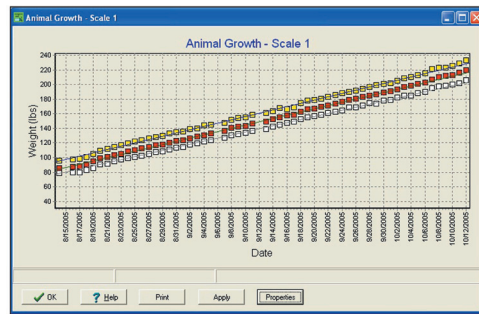
Daily Weigh reports assist with management decisions and tasks. *Daily Weigh* reports inform you of current performance and trends. You can spot changes in performance and react accordingly. Other reports aid in projecting feed rations changes and planning market loads. Reports for multiple scales can be compared at one time.

Forecast marketings and minimize sort loss. As advance scheduling of market loads becomes routine, you need a reliable method to predict marketings. The Mar-



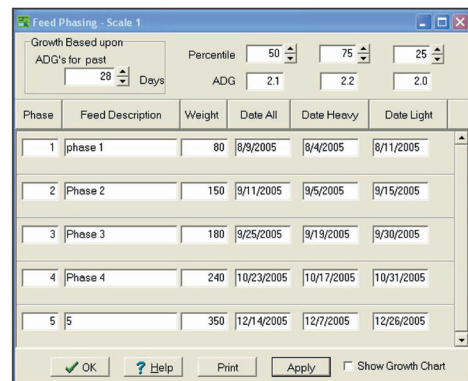
ket Predictor report projects market date and quantity of animals available. Another important benefit from the Market Predictor report is minimizing sort loss.

Accurate information assists you in scheduling market loads to meet the grid for your specific packer.



are displayed simultaneously. Growth rate can be compared from one day to the next. You spot changes in performance right away with the Growth report and can respond with appropriate management intervention.

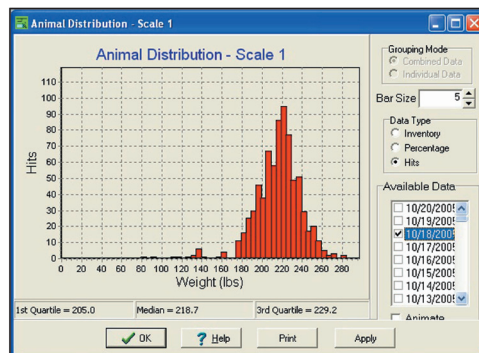
Track growth rate. The Growth report displays actual growth rate data points. Data for light, median, heavy and two other weight groups



essential to control costs and meet targeted feed budgets. The Phase Feed report predicts optimal dates to change feed rations. You gain with the Phase Feed report by feeding according to weight.

Stay on track with phase feeding. Feed represents a significant percentage of production costs. Feeding the proper ration to the appropriate weight range is

Monitor Weight Distribution. One objective of the Weight Watcher growth management system is monitoring weight distribution of a group of animals. The Daily



the variation from lightest to the heaviest pig. The Distribution report also enables you to evaluate changes in weight variation.

Weigh Distribution report provides a graphical presentation of the weight distribution of all animal visits to the Survey Scale for a given day. You can see at a glance

Date	Inventory	Visits	Water	High Temp (°F)	Low Temp (°F)
10/1/2005	175	965	367	83	70
10/2/2005	175	1011	340	79	73
10/3/2005	175	836	311	89	74
10/4/2005	175	769	334	90	80
10/5/2005	175	772	331	90	80
10/6/2005	175	1018	354	82	70
10/7/2005	175	717	249	74	72
10/8/2005	175	950	352	74	70
10/9/2005	175	992	355	75	70
10/10/2005	175	969	358	77	70
10/11/2005	175	971	405	74	43
10/12/2005	175	873	368	74	72
10/13/2005	175	824	358	75	72

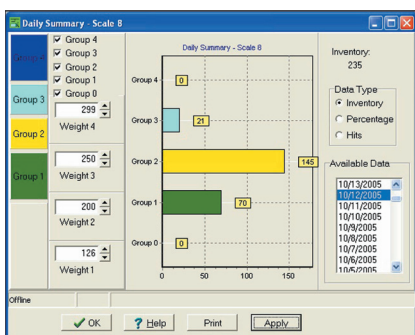
Review animal activity and environmental conditions. The Room Monitor report displays details on animal visits, water usage and environmental temperatures. Your Survey Scale must

be equipped with firmware version NOSSt 2.22 (or later), a water meter, suitable electrical connections and a temperature probe to create this report. Chart options that you can create include visit chart, water usage chart and temperature chart.

Date	Scale 8
9/14/2005	238
9/15/2005	238
9/16/2005	238
9/17/2005	238
9/18/2005	238
9/19/2005	238
9/20/2005	238
9/21/2005	238
9/22/2005	238
9/23/2005	238
9/24/2005	238
9/25/2005	238
9/26/2005	238
9/27/2005	238

Accurate Inventory count. The Inventory report shows the number of animals recorded for each scale. All other reports using inventory type calculations are based from this report.

View User Defined Weight Groups. The Daily Summary report displays a graphical view of daily weight information for user defined weight groups.



This report can show the estimated number of animals by weight range, the percentage of animals in a weight range or the number of visits for each weight range.

Options to save reports in various formats. All *Daily Weigh* reports can be saved as PDF files for data sharing purposes. Reports in tabular format can be copied to a Windows® clipboard and then pasted into a spreadsheet, word processor or text editor.

***Daily Weigh* Software available as annual user license.** A user license provides one year's use of *Daily Weigh* software.

Annual registration feature reminds you of update opportunities and fixes. A Registration code is issued with each *Daily Weigh* user license and renewal license. Registration codes aid to inform current users when program updates and fixes become available. Updates and fixes are provided to licensed users at no charge. More timely notification of updates and fixes improve the performance of your *Daily Weigh* software.

Summary of *Daily Weigh* Software Key Features:

- Review Real time Average Daily Gain data.
- Assess growth curves and evaluate data for groups or individual, exceptional animals.
- Compare performance data for pen averages or entire barns by location or by barn manager.
- Compare information from multiple scales.
- Market Predictor feature.
- Phase feed scheduling feature.
- Study behavior information and environmental influences on weight.
- Review and record room temperatures and water usage when Survey Scales are equipped with a temperature sensor and water meter.
- Reports can be saved as PDF files, copied to Windows clipboard and then pasted into a spreadsheet, word processor or text editor.
- Data Extract and Export Capabilities from Survey Scales.

For more information, contact Osborne Industries Customer Service.



120 N. Industrial Avenue • Osborne, KS 67473

Voice: 1-785-346-2192 • Toll Free: 1-800-255-0316

Email: sales@osborne-ind.com • Web: www.osbornelivestockequipment.com