



# OSBORNE<sup>®</sup>

EMPLOYEE OWNED. AMERICAN MADE.



## WEIGHT WATCHER<sup>™</sup> AUTO-SORT SYSTEM

The original auto-sort system for large pen finishing.

[osbornelivestockequipment.com](http://osbornelivestockequipment.com)

## It's more than just an auto-sort scale.

Weight Watcher is more than just a market-day automated sorter — it's a complete growth management system for large pen finishing. With Weight Watcher, producers grow pigs based on their actual weight, reducing weight variation and producing more uniform loads.

Today's packers demand the production and delivery of market animals with weights that must meet progressively tighter windows for acceptable weights. Marketing animals whose weights fall outside the specified weight ranges usually results in significant deductions from market prices. Weight Watcher is the answer to ensuring you're growing uniform animals and not marketing over or underweight pigs.



## Get the Weight Watcher advantage.



### CUT MARKET SORT LOSS

Grow pigs to full finishing weight to accurately match what your packer demands.



### GET TO MARKET FASTER

Reduce time to market by feeding animals based on their actual weights.



### REDUCE WEIGHT VARIATION

Reduce weight variation and stop marketing under or overweight pigs.



### ELIMINATE WASTED NUTRIENTS

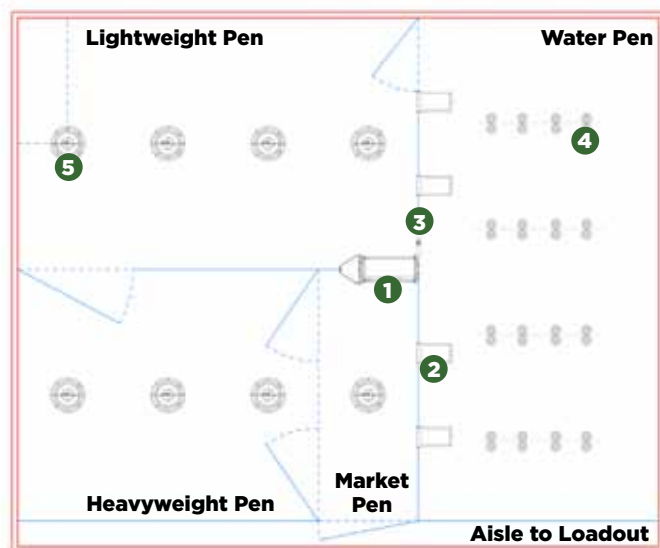
Reduce feed cost with targeted phase feeding based on animals' actual weight.

## The Weight Watcher Concept: How it Works

Adequate feed and water are essential to the success of growing market hogs. A Weight Watcher System splits feed and water into separate areas (or zones) and uses animals' natural movement between these two essential elements to automatically weigh and sort each pig. Animals are free to flow from one zone to the other at any time.

Every day, based on the animals' movement from zone to zone, the ACCU-ARM® Survey Scale™ automatically determines the pen's percentile weight. This weight, often the median weight of the group, is used to sort animals based on where their weight falls among their pen mates. Accurate phase feeding can be accomplished by feeding two separate rations in the feeding zones. Animals under the median weight are sorted into a "lightweight" feeding area where they can be fed a high-performance feed to accelerate gain. Animals over the median weight are sorted into a "heavyweight" feeding area where they can be fed a ration that maximizes return on gain.

The drawing at right shows a typical Weight Watcher barn layout for 500-head. Feeding areas occupy approximately half of the total barn space with the remaining space being dedicated to a drinking area. Gating is arranged such that converting a portion of the feeding pen along the alleyway to the market pen when it comes time to market animals is fast and easy.



- 1 Survey Scale
- 2 One-Way Gates
- 3 By-Pass Gate
- 4 Drinkers
- 5 Big Wheel Feeders



# WEIGHT WATCHER™ Auto-Sort System



## Sorting for market made fast and easy.

When it is time to market pigs, pen gates are closed to create a market pen. All animals meeting a user-defined market weight are automatically sorted and penned ready to load. Within hours, the market pen has sorted itself automatically, allowing animals to load with minimal stress and labor. Sorting for market with Weight Watcher completely eliminates the labor — and errors — associated with manual sorting so you always get the best return on your investment.

Stop marketing under or overweight hogs and perfectly match your packer's grid with Weight Watcher!



### **RUST-FREE CONSTRUCTION**

All high wear and animal-contact parts of the Survey Scale are made of 304 stainless steel to eliminate corrosion even in harsh barn environments.



### **SOLID SIDE PANELS & INTERIOR LIGHTS**

Solid scale sides prevent animals outside the scale from interfering with weighing, and interior LED lights make training easy, resulting in fewer fall outs.



### **ROBUST, AIR-DRIVEN COMPONENTS**

Industrial-quality, over-sized air cylinders and manifold ensure both entrance and sort gates open and sort smoothly and are easily serviced.



### **SINGLE LOAD CELL SUSPENSION**

One sensitive but robust load cell, positioned safely at the top of the scale away from debris, weighs each animal passing through the scale.



### **ACCESS DATA 24/7**

Access daily growth data for the entire pen right at the scale's controller or from the comfort of your office PC with the DailyWeigh software application.



## ACCU-ARM® Auto-Sort Survey Scale & Accessories

- **SINGLE LOAD CELL SUSPENSION** • Commercial-grade load cell is located at the top of the scale so it stays clean and away from dirt and debris.
- **PROVEN WEIGHING SYSTEM** • Weighing pigs with the Survey Scale is based on Osborne's innovative, cable-free ACCU-ARM design.
- **TWO-WAY SORT GATE** • Simple, two-way sorting with the Survey Scale has only a few moving parts for less maintenance and repair.
- **SIMPLE BARN LAYOUTS** • Retrofitting barns to a Weight Watcher layout is easy and requires a minimum investment in penning.
- **STRONG CONSTRUCTION** • All high-wear and animal contact points are constructed with 304 stainless steel to eliminate corrosion and keep scales running for years.



### ACCU-ARM® SURVEY SCALES

	Catalog Number	Style Metal Parts	Hog Capacity	Max Hog Weight (lbs   kg)	Dimensions		
					Length (in   mm)	Width (in   mm)	Height (in   mm)
	FS-SS0110	Combination Galvanized Steel & 304 Stainless Steel	500	370   168	73   1854	27   686	65   1651
	FS-SS0120	304 Stainless Steel	500	370   168	73   1854	27   686	65   1651

“ This was the first time in 28 years of raising hogs I actually enjoyed sorting hogs for market. Simply put, there's no work to it. All you need to do is program how many you want sorted and at what weight and the scale does the work for you. I wish I would have installed this in my buildings years ago; it puts a new level of enjoyment in raising hogs.

Mark B. - Pierson, IA USA



# WEIGHT WATCHER™ Auto-Sort System



## ACCU-ARM® SURVEY SCALE ACCESSORIES

Catalog Number	Description	Application
KS-SSM100	Spray Marker Kit	Spray animals to identify those reaching market weight
KS-SSA501	RFID Option (Antenna Assembly with ID Module)	Track and monitor animals' individual body weights and growth rate.

**Accessorize a Survey Scale** and Weight Watcher System to match your needs with spray markers for identifying animals meeting user-specified weight ranges or antenna assemblies for automatically tracking weights of individual animals. Use the Survey Scale for special tasks like automatically monitoring the growth of gilts to mature target weight

## ONE-WAY GATES

Catalog Number	Style Metal Parts	Minimum Required	Dimensions		
			Length (in   mm)	Width (in   mm)	Height (in   mm)
FS-SS0520	Combination Galvanized Steel & 304 Stainless Steel	4 per 500-hd	15   381	23   584	42   1067



**One-Way Gates** accompany each Weight Watcher System and are used to ensure animals pass through the Survey Scale each time they move from the watering to the feeding zones. The number of required One-Way Gates per system depends on the total number of animals per scale. Each gate features a double swing door with training lock.



## SAFETY BY-PASS GATES

Catalog Number	Style Metal Parts	Minimum Required	Dimensions		
			Length (in   mm)	Width (in   mm)	Height (in   mm)
FS-SS0550	Galvanized Steel	1 per Scale	4   102	23   584	53   1346
FS-SS0560	304 Stainless Steel	1 per Scale	4   102	23   584	53   1346

In the event of loss of air pressure, power, or failure of the Survey Scale's load cell due to power surge or disconnection, the emergency **By-Pass Gate** opens, allowing animals free access between the feeding and watering zones. The By-Pass Gate ensures no pen becomes overpopulated and is a required backup accessory for each Survey Scale.





## BIG WHEEL® Feeders

### SUPPORTING EQUIPMENT: BIG WHEEL® FEEDERS

Catalog Number	Model Number	Style Metal Parts	Hog Capacity	Hog Weight	Feed Capacity* (lbs   kg)	Trough Diameter (in   cm)	Feeder Height (in   cm)	
WEAN-TO-FINISH FEEDER								
	FF-00RF2FS	RF2FS	Combo Painted & 304 Stainless Steel	Up to 60 head	Wean to Market	4.5 bu. 235   106	31   79	36   91
FINISH FEEDERS								
	FF-000RF2 FF-000RF2P FF-000RF2S	RF2 RF2G RF2S	Standard Painted Steel Combo Zinc Plated/Galvanized Steel Combo Painted & 304 Stainless Steel	Up to 60 head	30 lbs. (14 kg) to market	4.5 bu. 235   106	31   79	36   91
	FF-000RF1 FF-000RF1P FF-000RF1S	RF1 RF1G RF1S	Standard Painted Steel Combo Zinc Plated/Galvanized Steel Combo Painted & 304 Stainless Steel	Up to 60 head	50 lbs. (23 kg) to market	7.5 bu. 392   178	38   97	40   102
	FF-000RF3 FF-000RF3P FF-000RF3S	RF3 RF3G RF3S	Standard Painted Steel Combo Zinc Plated/Galvanized Steel Combo Painted & 304 Stainless Steel	Up to 60 head	50 lbs. (23 kg) to market	15 bu. 784   356	38   97	60   152
FINISH FEEDER WITH PROTECTIVE HOPPER RING								
	FF-00RF2R FF-00RF2RP	RF2R RF2RG	Standard Painted Steel Combo Zinc Plated/Galvanized Steel	Up to 60 head	30 lbs. (14 kg) to market	4.5 bu. 235   106	31   79	36   91

\* Feed capacity based on 42 lbs. per cubic foot.

“ We are using the Osborne Big Wheel Feeders (RF2) and we love them. We have had no problems getting the pigs started and have seen a reduction of starve-outs and reduced mortality rates. In our barns, we have observed that when given a choice, the piglets actually prefer the round Osborne feeder over the others. The Osborne Big Wheel feeders require minimal adjustment and are easier to manage than our conventional stainless steel feeders.

— James W. - Montrose, SD USA ”

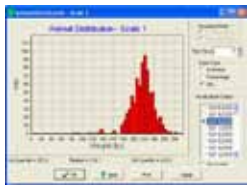


# WEIGHT WATCHER™ Auto-Sort System

**The DailyWeigh Software Application** for Windows collects, stores, accesses, and displays all the information collected by the Survey Scale in a Weight Watcher System. Data presented with DailyWeigh is displayed in user-friendly, graphical form to easily spot growth trends, pen distributions, and accurately project time to market with up-to-date growth data.

## WEIGHT WATCHER™ SOFTWARE

Description	Application
DailyWeigh Software	Collects, stores, and displays information collected by Survey Scale(s).
DailyWeigh II Software	Collects, stores, and displays information collected by Survey Scale(s). For use with RFID option.



### ANIMAL DISTRIBUTION

See the distribution of weights for all animals in the pen.



### FEED PHASING

Adjust feed rations based on weight as animals grow.



### MARKET PREDICTOR

Accurately predict animals for market weeks in advance.



## YOUR DATA MANAGER

Monitoring scale operation and growth trends is easy with the DailyWeigh software application. A variety of reports are available informing scale operators of current performance, including:

- Daily Summary
- Room Monitor
- Traffic Report
- Inventory Report
- Distribution Report
- Growth Chart
- Data Viewer
- Phase Feeding
- Market Predictor
- Scale Properties

In addition to accessing data and changing profile settings at the PC equipped with the DailyWeight software application, all data can easily be accessed and displayed right at the Survey Scale's electronic digital display.



**Simple interface makes accessing data and changing user settings fast and easy.**

**IFC PLUS**

Equipped with an Integrated Function Controller Plus that collects, processes, and presents data, each scale provides access to the real-time data you need. Simple turn knobs and switches, and a three-digit display provides for simple navigation and operation.





“ The Survey Scale will allow us to manage our phase feeding to maximize growth and feed conversion because of the great amount of information the scale collects on weight and growth. Osborne has a solid scale with the experience and service to back it up.

— Bryan J., Orleans, IN USA

My reasons for putting in a sorter were: (1) To make loading bacon [finishing] pigs a one man operation, (2) I hope to optimize my sale weights, and (3) I hope to learn when the best time to change feed rations is. This information can be applied to other buildings which do not have a sorter. You always have to look at the speed in a car when going through a speed restriction and the sorter should have much the same effect.

— Stephen F., Thirsk, UK

We saw an immediate benefit from the Weight Watcher growth management system and Daily Weigh Market Predictor Report. We received no sort loss from the first sort group of our Weight Watcher barn.

— Melissa L., Loogootee, IN USA



## Auto-Sorting for Hoop Barn Finishing

Bring technology to the hoop barn with Weight Watcher and experience the benefits of reduced weight variation and marketing pigs at the right time.

Like Weight Watcher for large pens in traditional finishing, simple layouts for hoop structures are flexible enough to accommodate a variety of requirements to match your specific growing standards or marketing plan. Capture the highest market premiums and reduce sorting labor and errors without sacrificing pig care.

Whether you raise pigs indoors or outdoors, contact Osborne today to start your custom-designed Weight Watcher System!



Patent and trademark information available at [osborne-ind.com/ip](http://osborne-ind.com/ip).



120 N. Industrial Ave. | PO Box 388 | Osborne, KS 67473 | USA  
800-255-0316 | 785-346-2192 | [sales@osborne-ind.com](mailto:sales@osborne-ind.com)  
[www.osbornelivestockequipment.com](http://www.osbornelivestockequipment.com)



MS-0432\_D