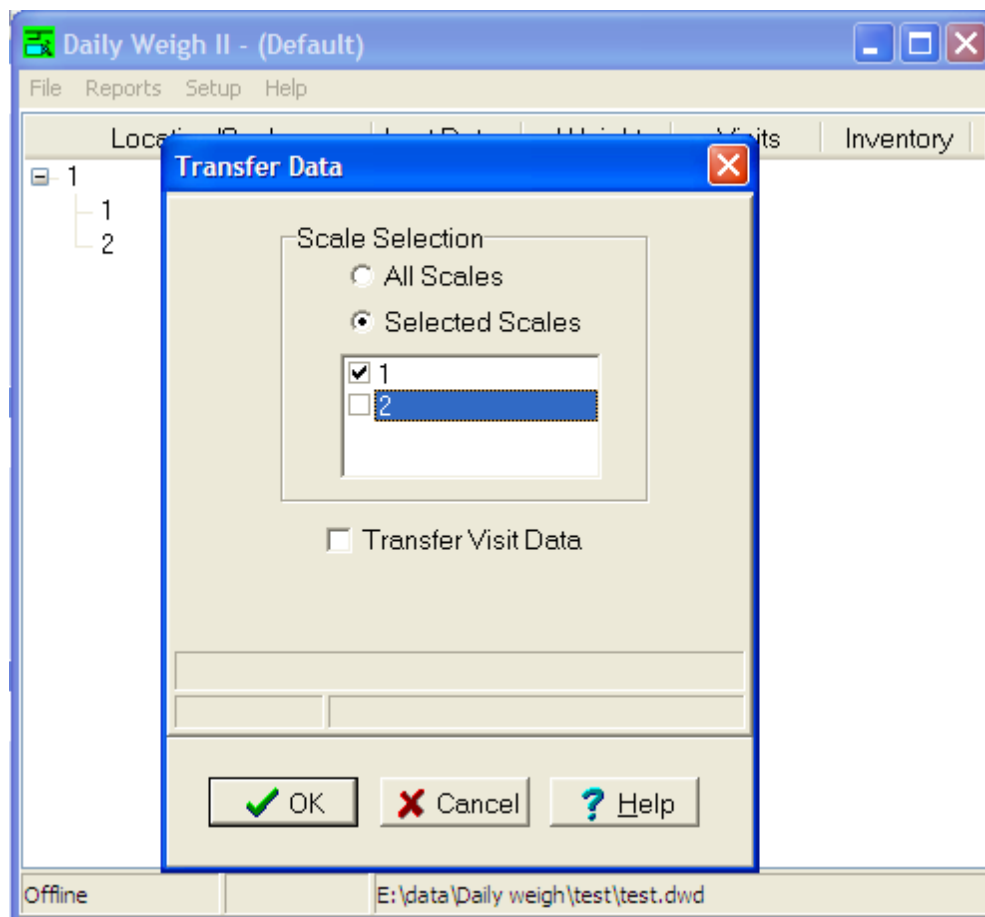


MOVING ANIMALS BETWEEN SCALES IN DAILY WEIGH II

- 1.) Physically move the animal to the new pen.
- 2.) In the Daily Weigh II software application, transfer the animal's data from the "old" Survey Scale to the "new" Survey Scale.



- 3.) Move the animal using the tag table move function.

**NOTE: Failure to follow these steps will result in the animal existing on multiple scales.
For more information, please contact Osborne Technical Service.**