



OSBORNE®

FIRE® Performance Testing System

Load Cell Electrical Isolation Kit KR-FFD610 Installation Instructions

Please follow these step-by-step instructions to install the Load Cell Electrical Isolation Kit KR-FFD610. This Kit contains all the parts that you will need. Identify these parts with the Drawing below and to the current load cell assembly on your FIRE feed trough. Refer to the Parts List and Drawings that came with your FIRE feeder to help you to recognize the changes that you will make.

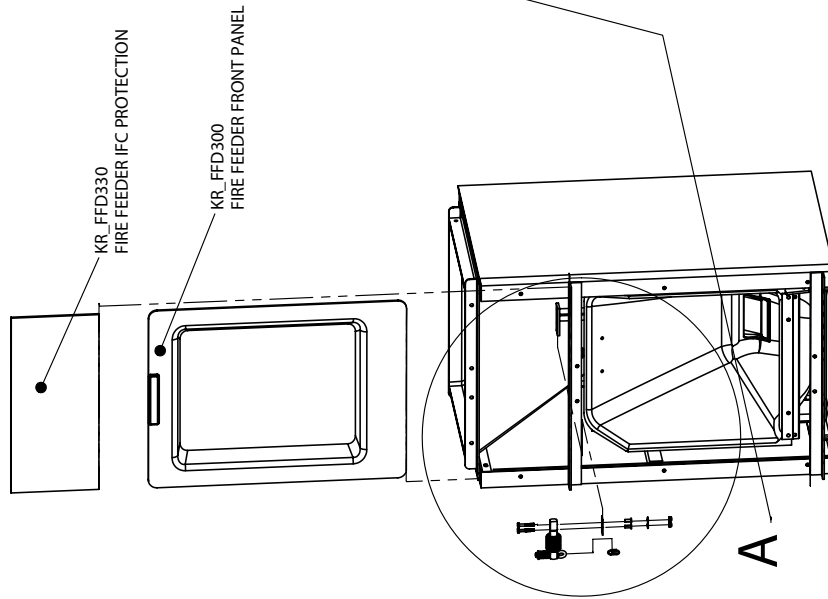
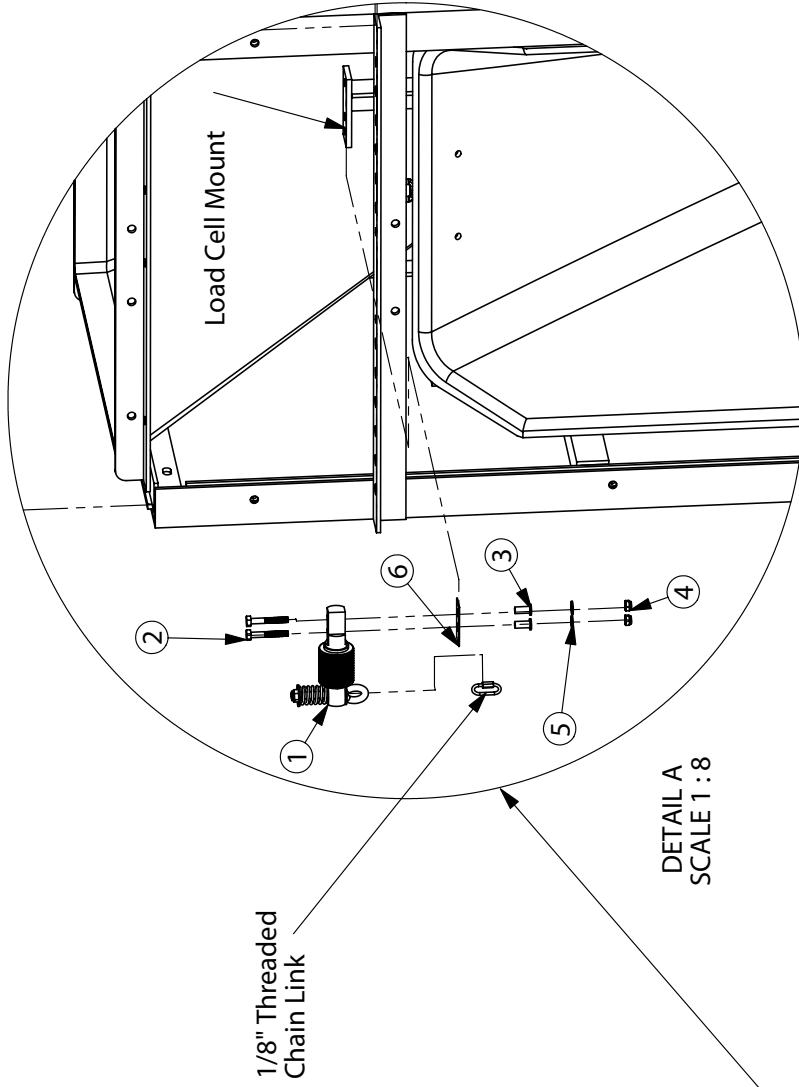
1. Remove the FIRE feeder IFC protection panel, KR-FFD330, located above the feeder trough by raising the panel upward until it is released from the feeder frame.
2. Using a 1/2-in open-end wrench and socket, remove the 2-ea 5/16 x 1-in bolts which fasten the FIRE feeder front panel, KR-FFD300, to the feeder frame. Raise the front panel upward until the panel is free from the feeder frame. Retain the bolts and nuts for use during reassembly.
3. Disassemble the 1/8-in threaded chain-link from the load cell eyebolt and the 5/16-in eye nut fastened to the trough hanger rod. Retain the chain link for use during reassembly.
4. Remove the two 5/16 x 1-1/2-in diameter bolts, washers, and nuts which fasten the load cell (1) to the load cell mounting bracket. Discard the bolts, washers, and nuts.
5. Locate the isolation pad (6) and place it between the load cell mount and the load cell (1). Notice that the holes in the pad are offset from center. Position the longer part of the isolation pad pointing toward the load cell. The extra length of the pad ensures that the load cell is shielded from any contact with the mounting bracket.
6. Place a 1/4 x 1-3/4-in bolt (2) through the load cell from the top pointing downward. Insert the bolt through the isolation pad (6) and align with the appropriate hole in the mounting bracket.
7. Locate a plastic shoulder bushing (3) and insert the bushing onto the bolt through the isolation pad and into the load cell from the bottom side of the mounting bracket top plate. This bushing isolates the bolt from contact with the top plate of the mounting bracket. Secure the bolt, using a 1/4-in flat washer (5) and a 1/4-in hex loc nylon insert nut (4). Install a second bolt in the same way in the other load cell mounting hole. Tighten the nuts firmly, but without deforming the plastic isolation pad.
8. Attach the 1/8-in threaded chain-link to the load cell eyebolt and the 5/16-in eye nut fastened to the trough hanger rod.
9. Check that the trough hanger rod is free of any contact with surrounding steel components. If the trough hanger rod is in contact with any steel component, make the necessary adjustment of position of the load cell or the load cell mounting bracket or both to eliminate contact.
10. Reinstall the FIRE feeder front panel and fasteners, using the 2-ea 5/16 x 1-in bolts and nuts removed earlier.
11. Replace the FIRE feeder IFC protection panel.
12. The load cell assembly is now electrically isolated from the surrounding steel scale components. If an electrical continuity tester or a volt-ohmmeter is available, electrical continuity between the load cell and FIRE feeder frame can be tested and should be completely eliminated.



OSBORNE®
INDUSTRIES INC.

P.O. Box 388 • Osborne, KS 67473 U.S.A.
Phone: 1-800-255-0316 • Fax: 1-785-346-2194
sales@osborne-ind.com • www.osbornelivestockequipment.com

**KR-FFD610
FIRE FEEDER LOAD CELL
ISOLATION KIT ASSEMBLY**



Item No.	Part No.	Description	Qty.
1	KR-FDE235	FIRE® Load Cell	1
2	RFB-1671	HHCS 1/4" x 1 3/4" Long SS	2
3	RFM-7423	Shoulder Bushing 1/4" ID x 5/16" OD x 3/4" Long	2
4	RFN-1401	Nut 1/4" Hex Loc Nylon Insert SS	2
5	RFW-1201	Washer 1/4" Flat SS	2
6	SR-FFD601	Load Cell Isolation Pad	1