

ASSEMBLY INSTRUCTIONS

Before beginning installation of the FIRE Feeder Lift Kit, ensure the area under the feeder is clean and free of debris.

If anchored, unbolt the FIRE Feeder from the floor.

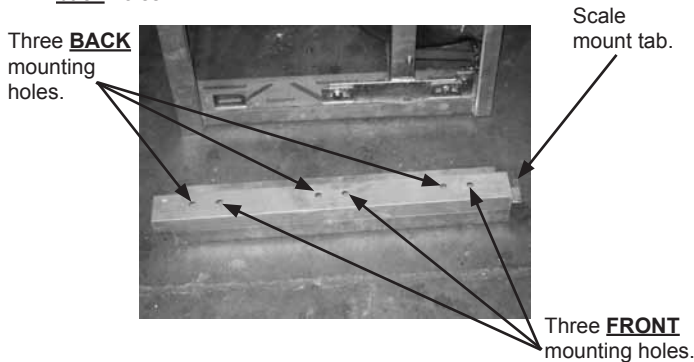
Remove the two side access panels.

REQUIRED TOOLS	
Punch or alignment tool	5/8" socket wrench
11/16" wrench	

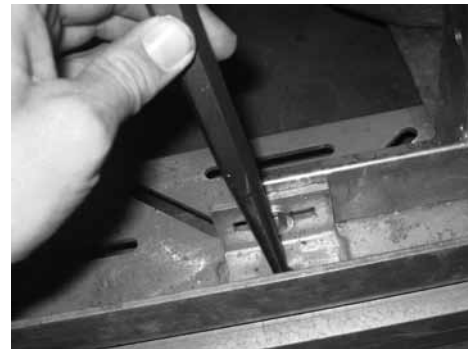
PARTS LIST		
Part No.	Description	Qty.
KR-FFD411	Left-side anchor plate	1
KR-FFD412	Right-side anchor plate	1
KR-FFD413	Lift kit bolt kit (includes fasteners below)	1
RFB-4100	7/16 x 1" bolt	6
RFN-4100	7/16" nut	6
RFW-4200	7/16" lock washer	6

- Place the lift kit anchor plate next to the FIRE Feeder and identify the three holes as shown below. These holes will be used to bolt the feeder to the anchor plate. Ensure the scale mount tab is toward the front of the feeder.

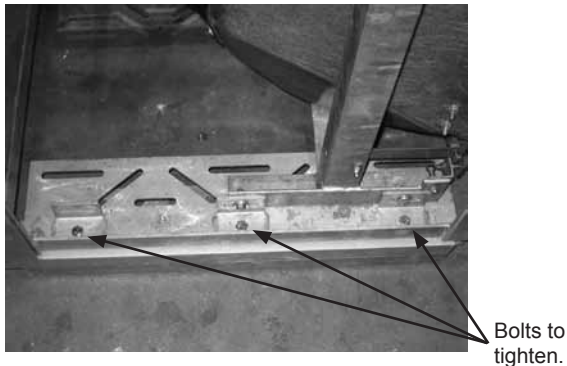
NOTE: For feeder **WITHOUT** weigh races, use the three **front** mounting holes. For feeders **WITH** weigh races, use the three **back** holes.



- Slide each anchor plate under the feeder by lifting one side of the feeder at a time. Use a punch or alignment tool to line up the bolt holes.



- Insert three bolts into the holes as shown below. Use the lock washers and nuts and tighten the bolts until snug. Repeat this procedure for the opposite anchor plate.



- Anchor the FIRE Feeder to the floor through the lift kit anchor plate. Mount the feeder to flooring in two positions on both anchor plates. Re-install the FIRE Feeder access panels.

